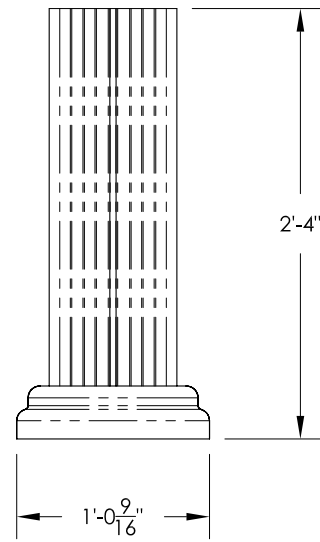
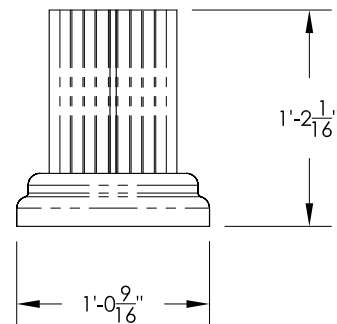


1570 CBU VIEW WITH INSTALLED ACCESSORIES

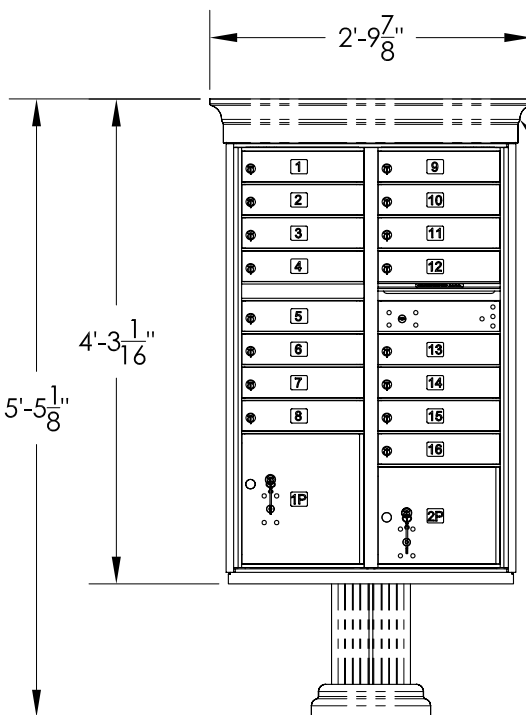
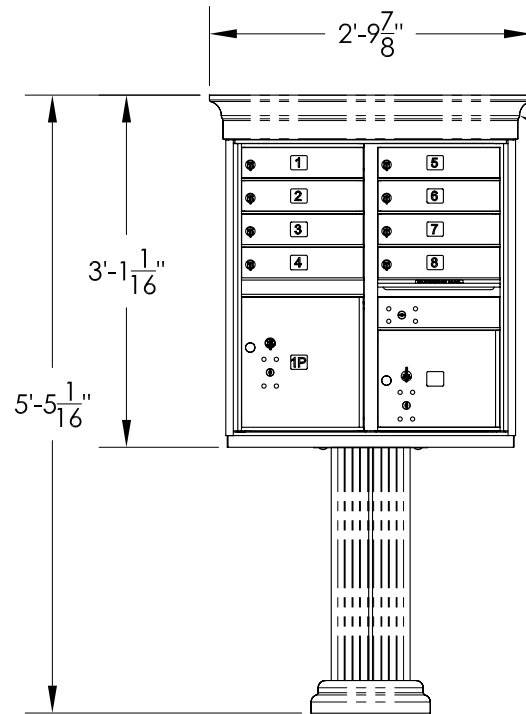
**MULTI-UNIT PAD SPECIFICATION  
IF INSTALLING WITH CROWN CAP**



FRONT & SIDE VIEW  
TALL PEDESTAL  
(VOGUEP128)

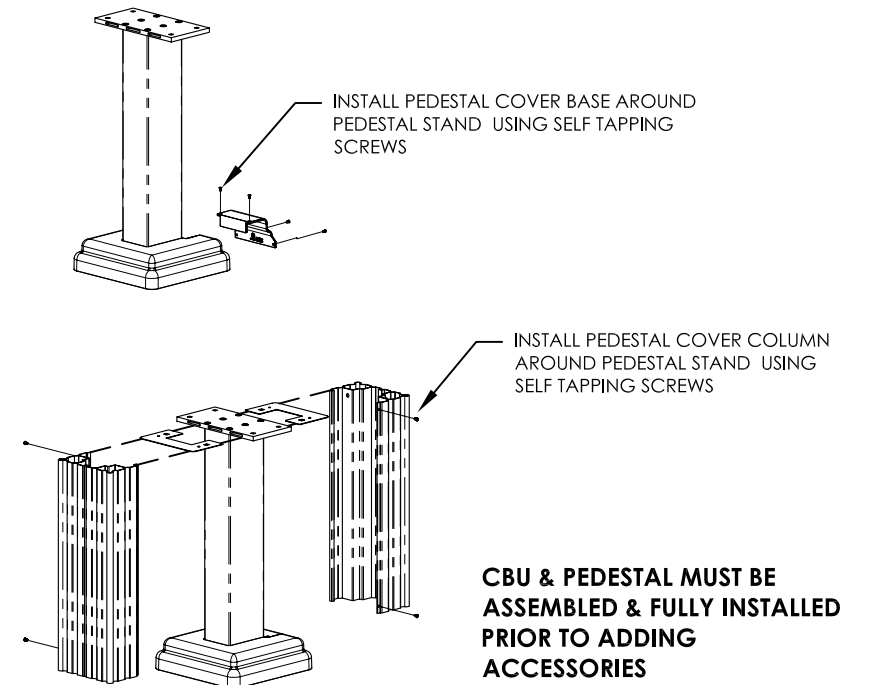
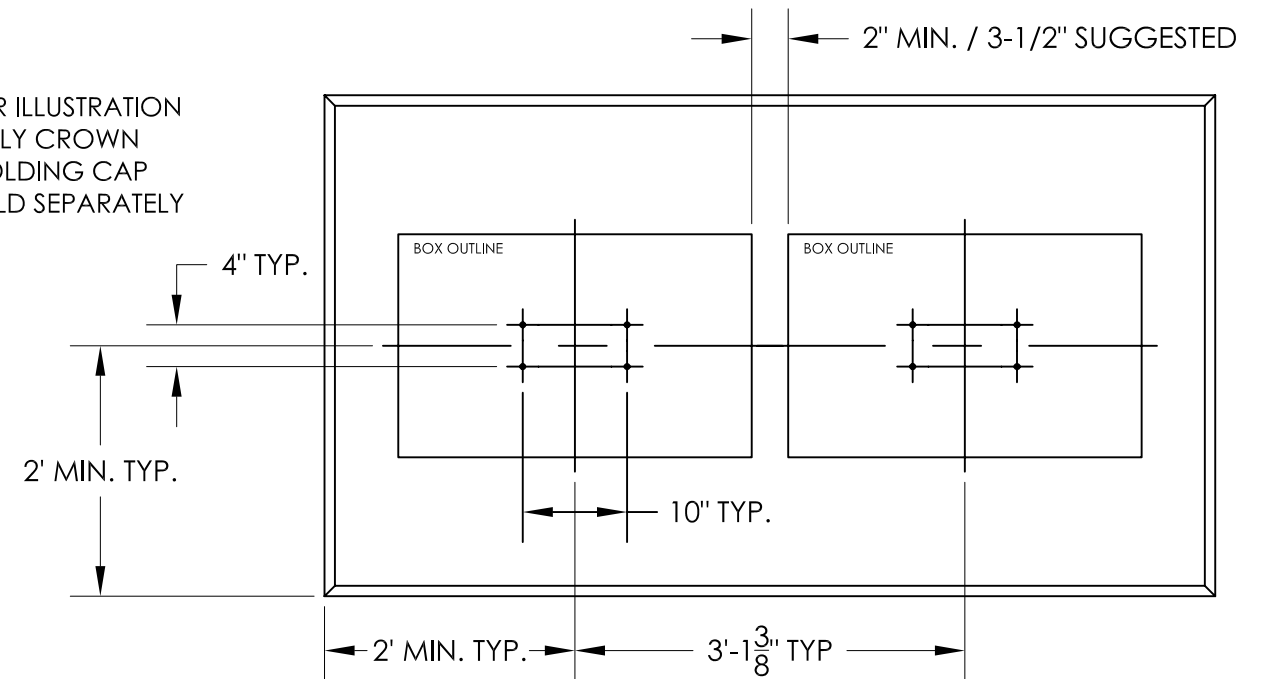


FRONT & SIDE VIEW  
SHORT PEDESTAL  
(VOGUEP114)



FOR ILLUSTRATION  
ONLY CROWN  
MOLDING CAP  
SOLD SEPARATELY

FOR ILLUSTRATION  
ONLY CROWN  
MOLDING CAP  
SOLD SEPARATELY



NOTES:

1. CBU & PEDESTAL MUST BE ASSEMBLED AND FULLY INSTALLED PRIOR TO ADDING ACCESSORIES.
2. PEDESTAL COVER AND CAP SOLD SEPARATELY.
3. AVAILABLE IN ALL STANDARD CBU POWDER COAT FINISHES.
4. PEDESTAL COVER INSTALLED USING SELF-TAPPING SCREWS (INCLUDED).
5. PEDESTAL BASE COVER DESIGNED TO FIT OVER FLORENCE 1570 SERIES CBU PEDESTAL.

PRODUCT SERIES: VOGUE™ CBU ACCESSORIES PILLAR PEDESTAL  
COVER

**AF FLORENCE**  
manufacturing company  
5935 Corporate Drive • Manhattan, KS 66503  
www.ath-florence.com • (800) 275-1747  
A GIBRALTAR INDUSTRIES COMPANY

|                |                       |          |           |
|----------------|-----------------------|----------|-----------|
| MODEL          | PILLAR PEDESTAL COVER | REV      | A         |
| SCALE          | NONE                  | DATE     | 1/26/2011 |
| DRAWING NUMBER | VOGUEP1CS             | DRAWN BY | AFD       |
|                |                       | SHEET    | 1 OF 1    |