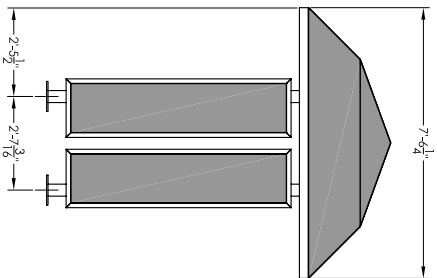
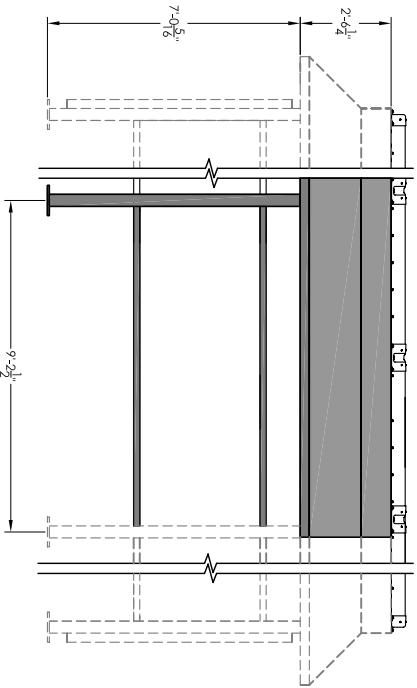


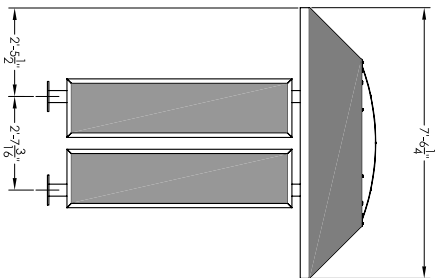
VARIO IV END TO END MID-SECTION



SIDE VIEW W/ PEAK ROOF
BACK TO BACK

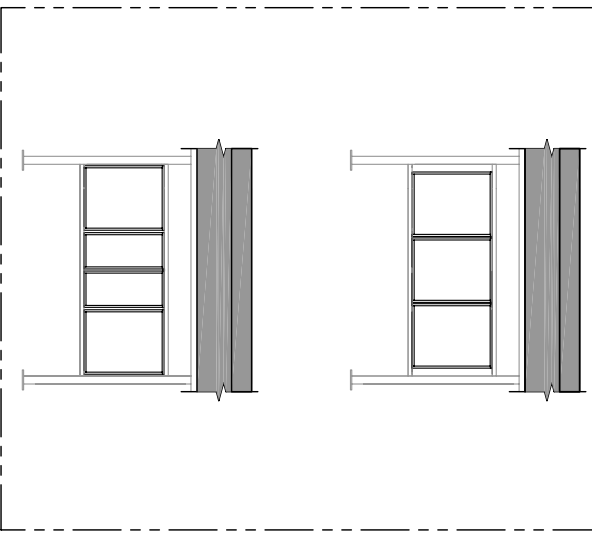


VARIO IV END TO END MID-SECTION



SIDE VIEW W/ SKYLIGHT
BACK TO BACK

CASING FOR 4C MAILBOXES INCLUDED
MAXIMUM 4C UNIT CONFIGURATIONS BELOW



SHELTER FEATURES:

1. RATING: 90 MPH OR 150 MPH
2. ROOF STYLE : PEAK OR SKYLIGHT
3. FINISH: BLACK, DARK BRONZE, WHITE, FOREST GREEN, SILVER SPECK, POSTAL GREY OR SANDSTONE
4. SIDE PANEL PLYWOOD INTERIOR COLOR: TAN, BLACK, GREY
5. 4C MAILBOX SELECTION: REFER TO FLORENCE VERSATILE SUITE A, C, E, F, OR G
6. SOLAR OR A/C POWERED LIGHT OPTION SOLD SEPARATELY
7. FOR TECHNICAL FOUNDATION AND ROOF DETAILS REFER TO SPECIFIC MODEL SPECIFICATION DOCUMENTS

DESCRIPTION:
VARIO IV 4C CONFIGURABLE MAIL SHELTER
MID-SECTION BACK TO BACK



SIZE: **A** SHEET: **1 OF 1**

DRAWING NUMBER: **VAR4B MIDCS**

THIS DRAWING IS THE SOLE PROPERTY OF FLORENCE MANUFACTURING WHO CLAIMS PROPRIETARY RIGHTS IN THE MATERIAL DISCLOSED. IT IS ISSUED IN CONFIDENCE FOR ENGINEERING INFORMATION ONLY AND MAY NOT BE COPIED OR USED FOR INFORMATION OR MANUFACTURE OF ANYTHING SHOWN WITHOUT SPECIFIC PERMISSION FROM FLORENCE MANUFACTURING. COPYRIGHT FLORENCE CORP 2007