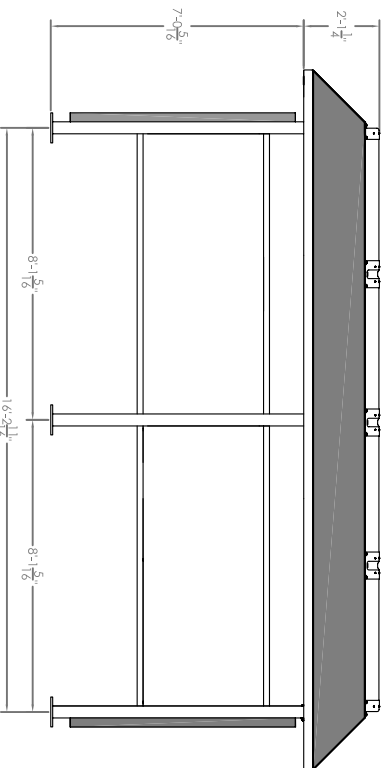
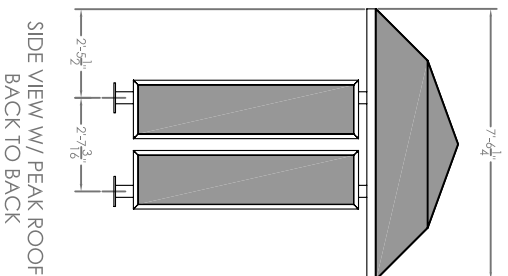


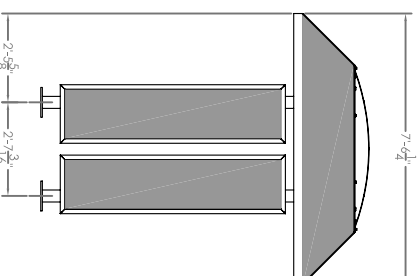
VARIO III END TO END W/ PEAK ROOF



VARIO III END TO END W/ SKYLIGHT ROOF

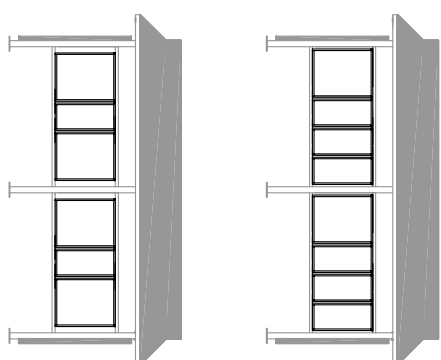


SIDE VIEW W/ PEAK ROOF  
BACK TO BACK



SIDE VIEW/SKYLIGHT  
BACK TO BACK

CASING FOR 4C MAILBOXES INCLUDED MAXIMUM  
4C UNIT CONFIGURATIONS BELOW



**SHELTER FEATURES:**

1. RATING: 90 MPH OR 150 MPH
2. ROOF STYLE : PEAK OR SKYLIGHT
3. FINISH: BLACK, DARK BRONZE, WHITE, FOREST GREEN, SILVER SPECK, POSTAL GREY OR SANDSTONE
4. SIDE PANEL PLYWOOD INTERIOR COLOR: TAN, BLACK, GREY
5. 4C MAILBOX SELECTION: REFER TO FLORENCE VERSATILE SUITE A, C, E, F, OR G
6. SOLAR OR A/C POWERED LIGHT OPTION SOLD SEPARATELY
7. FOR TECHNICAL FOUNDATION AND ROOF DETAILS REFER TO SPECIFIC MODEL SPECIFICATION DOCUMENTS

**DESCRIPTION:**  
VARIO III 4C CONFIGURABLE MAIL SHELTERS  
END TO END (BACK TO BACK)



THIS DRAWING IS THE SOLE PROPERTY OF FLORENCE MANUFACTURING WHO CLAIMS PROPRIETARY RIGHTS IN THE MATERIAL DISCLOSED. IT IS ISSUED IN CONFIDENCE FOR ENGINEERING INFORMATION ONLY AND MAY NOT BE COPIED OR USED FOR INFORMATION OR MANUFACTURE OF ANYTHING SHOWN WITHOUT SPECIFIC PERMISSION FROM FLORENCE MANUFACTURING.  
COPYRIGHT FLORENCE CORP. 2007

SIZE: **A** SHEET: **1 OF 1**

DRAWING NUMBER:  
**VAR3EBCS**