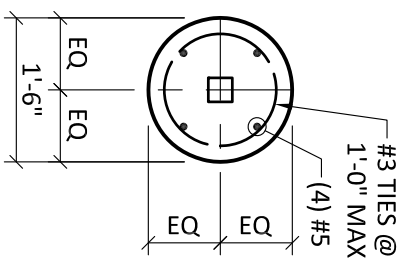
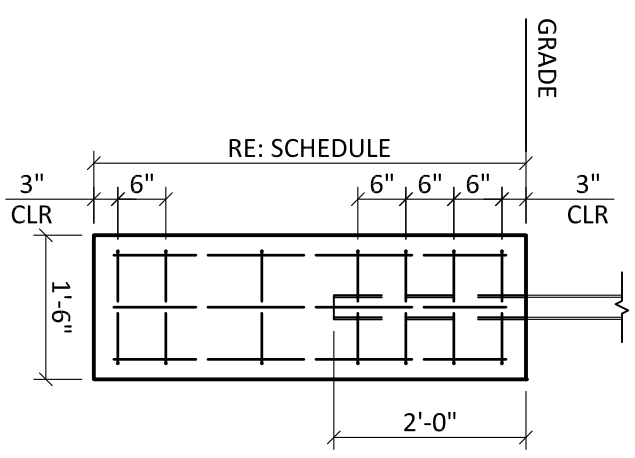


sentinel™ solar site lite Pier Foundation Installation (Embedded In-Ground Mount)

PIER FOUNDATION			
IBC Basic Wind Speed	IBC Wind Exposure Category	Min Allowable Lateral Soil Bearing Capacity	Required Depth
150 mph	B	200 pcf	3'-0"
		100 pcf	3'-6"
	C	200 pcf	3'-0"
		100 pcf	3'-9"
	D	400pcf	3'-0"
		200 pcf	3'-3"
100 pcf	4'-0"		
90 mph	B	400 pcf	3'-3"
		200 pcf	4'-0"
	C	200 pcf	4'-0"
		100 pcf	5'-0"
	D	400 pcf	3'-3"
		200 pcf	4'-0"
100 pcf	5'-6"		



PLAN
SCALE: NONE



SECTION
SCALE: NONE

EQ - EQUAL
CLR - CLEAR
MIN - MINIMUM

STRUCTURAL NOTES:

- THIS DESIGN INTENDED FOR THE SUPPORT OF THE SOLAR LIGHT ASSEMBLY AS MANUFACTURED BY FLORENCE MANUFACTURING.
- DESIGN IN ACCORDANCE WITH THE 2006 INTERNATIONAL BUILDING CODE (IBC). INSTALLER SHALL VERIFY LOCAL JURISDICTION FOR ADOPTIONS AND AMENDMENTS.
- DESIGN WIND LOADS ARE BASED ON A BASIC WIND SPEED (3-SECOND GUST) OF 90 MPH & 150 MPH. RE: SCHEDULE FOR FOUNDATION REQUIREMENTS BASED ON VARYING WIND SPEED & EXPOSURE CLASSIFICATIONS. INSTALLER SHALL VERIFY DESIGN WIND REQUIREMENTS WITH LOCAL JURISDICTION.
- FOUNDATION HAS BEEN DESIGNED FOR A MINIMUM NET ALLOWABLE SOIL BEARING PRESSURE OF 1,500 PSF.
- FOUNDATIONS SHALL BEAR IN UNDISTURBED SOILS OR CONTROLLED STRUCTURAL FILL AS APPROVED BY A GEOTECHNICAL ENGINEER.
- VERIFY FROST PROTECTION REQUIREMENTS WITH LOCAL JURISDICTION.
- CONCRETE SHALL HAVE A MINIMUM COMPRESSIVE STRENGTH OF 4,000 PSI AT 28 DAYS UNLESS OTHERWISE SPECIFIED.
- THE WATER/CEMENT RATIO SHALL NOT EXCEED .50 FOR ALL CONCRETE.
- REINFORCING STEEL SHALL BE BILLET STEEL CONFORMING TO ASTM A615, GRADE 60.
- ALL CONCRETE SHALL BE AIR ENTRAINED, 6%(±) BY VOLUME.

CERTUS
117 SW 6th Avenue; Suite 201
Topeka, Kansas 66603
Phone: (785)291-0400

sentinel™
PIER FOUNDATION INSTALLATION
(EMBEDDED IN-GROUND MOUNT)
FLORENCE MANUFACTURING

DESIGNED BY AMS	01070065
DRAWN BY AMS	W.O.
APPROVED BY TRT	
DATE 11/08/07	
SHEET NO. S1.3	